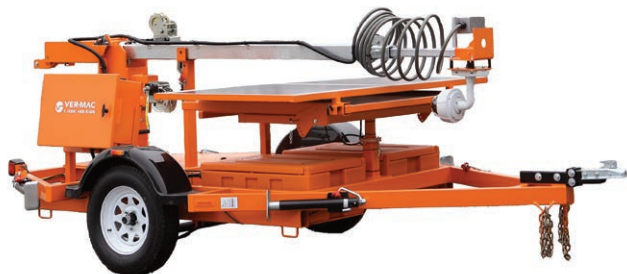


❖ **CAMERA TRAILER - CT-2430**

The CT-2430 is a portable camera trailer designed to provide height and stability for the deployment of outdoor dynamic video surveillance. The CT-2430 camera trailer is perfect to remotely monitor work zones, construction sites, special events or any application where permanent cameras are not available or feasible.

**FEATURES AND BENEFITS OF CT-2430**

- **30' galvanized mast** – rotates 360 degrees and retracts for easy transport
- **Tilt-and-Rotate solar panels** – maximize solar recharging and increase battery life
- **12 VDC / solar power system** – sustainable video surveillance anywhere
- **Environmentally friendly** – no generator, noise or pollution
- **Wireless communication** – remote monitoring from your PC, laptop, tablet or smartphone
- **Multi-use** – accepts most IP video surveillance cameras and non-intrusive traffic sensors
- **Compact design** – deploys in 10 minutes and easy to tow and store
- **PTZ camera control** – pan, tilt and zoom on your desired location
- **Preset views** – create several views for instant one-click redirecting of camera



## BENEFITS OF REMOTE MONITORING

### WORK ZONES

- **View incidents quicker** – improving emergency response
- **Smart Work Zone** – monitor congestion “hot spots”
- **Integrate into TMC** – manage with existing cameras

### CONSTRUCTION SITES

- **Protect equipment** – discourage theft and vandalism
- **Save time and money** – less surveillance personnel needed
- **Manage work site** – improve scheduling and logistics

### SPECIAL EVENTS

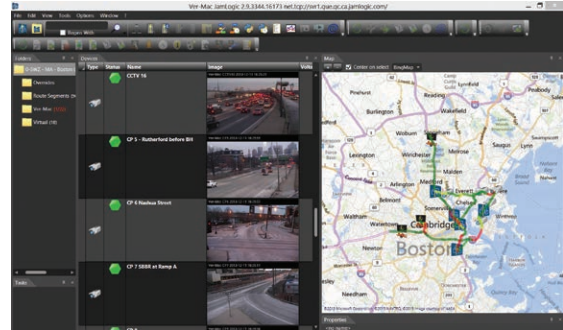
- **Prevent incidents** – view and alert security immediately
- **Video recording** – incident record for investigation
- **Manage pedestrians and motorists** – improve safety and mobility

## HIGH-QUALITY CONSTRUCTION

- **Galvanized mast** – complete protection from rust
- **Powder coating superior finish** – impact, humidity, salt spray and rust resistant
- **4 leveling jacks** – for stabilization and easy transportation
- **Manual lift mechanism** – for quick deployment
- **Heavy-duty plastic fenders** – for durability
- **Plastic battery boxes** – to minimize battery corrosion
- **Lockable control box** – for security

## JAMLOGIC SOFTWARE

CT-2430 comes with Ver-Mac’s high-speed modem with GPS to maximize your productivity, efficiency and profitability all remotely from your office or home!



- View your equipment in a list and GPS map view
- View you camera images on a single screen
- Interactive list and map view
- Integrate with PCMS and sensors
- View communication status and battery voltages

## OVERALL DIMENSIONS

- Overall length: 179 in. (4541 mm)
- Overall width: 90 in. (2296 mm)
- Operating height: 379 in. (9628 mm)
- Traveling height: 58 in. (1462 mm)
- Axle/suspension: 1588 kg (3,500 lb.)
- Weight (approx.): 1280 kg (2,822 lb.)

## OPTIONS

- Rugged PTZ dome camera (various models available)
- Stream live video of work zone
- Record video
- Traffic sensors

Ask for custom options available to meet your needs.

- 1-year warranty on complete trailers
- 2-year warranty on electronics manufactured by Signalisation Ver-Mac Inc.

YOUR LOCAL DISTRIBUTOR



**VER-MAC**

1781 BRESSE STREET, QUÉBEC, QUEBEC G2G 2V2 CANADA  
 T: 418.654.1303 TF: 888.488.7446 F: 418.654.0517  
 WWW.VER-MAC.COM